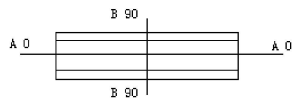
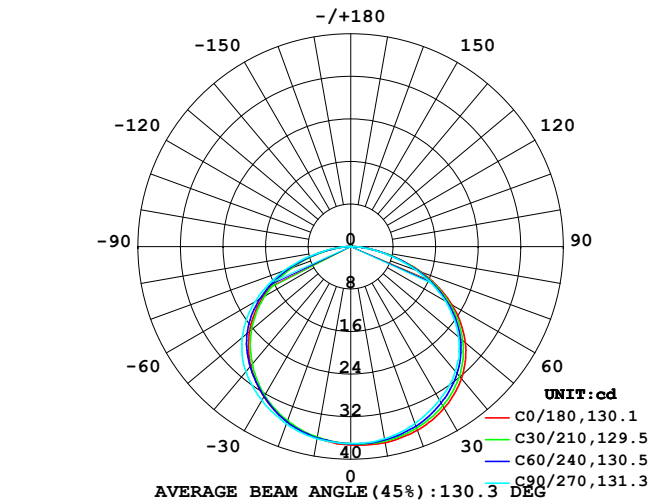


## LUMINAIRE PHOTOMETRIC TEST REPORT

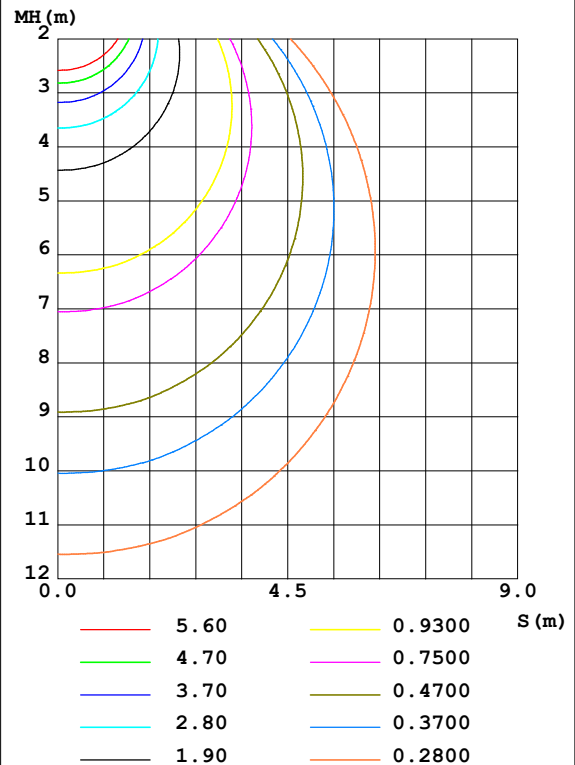
Test:U:24.00V I:0.243A P:5.83W PF:1.000 Freq:0Hz Lamp Flux:121.17lx1 lm		
NAME: 22408-4000R-R	TYPE:	WEIGHT:
SPEC.:	DIM.:	SERIAL No.: 2025123001
MFR.:	SUR.:	Shielding Angle:

DATA OF LAMP		PHOTOMETRIC DATA Eff: 20.78 lm/W			
MODEL		Imax(cd)	37.44	S/MH(C0/180)	1.30
NOMINAL POWER(W)		LOR(%)	100.0	S/MH(C90/270)	1.35
RATED VOLTAGE(V)	24	TOTAL FLUX(lm)	121.17	$\eta$ UP,DN(C0-180)	0.0,50.1
NOMINAL FLUX(lm)	121.171	CIE CLASS	DIRECT	$\eta$ UP,DN(C180-360)	0.0,49.9
LAMPS INSIDE	1	$\eta$ up(%)	0.1	CIBSE SHR NOM	1.50
TEST VOLTAGE(V)	24	$\eta$ down(%)	99.9	CIBSE SHR MAX	1.50

LUMINOUS INTENSITY DISTRIBUTION DIAGRAM



C0 PLANE ISOLUX DIAGRAM (UNIT:lx)



C Range: 0 - 360DEG  
C Interval: 15.0DEG  
Test Speed: HIGH  
Temperature:25DEG  
Operators:SENPU  
Test Date:2025-12-30

$\gamma$  Range: 0 - 100DEG  
 $\gamma$  Interval: 1.0DEG  
Test System:EVERFINE GO-2000B\_V1 SYSTEM V2.00.444  
Humidity:61%  
Test Distance:8.000m [K=1.0000]  
Remarks:

## ZONAL FLUX DIAGRAM

## ZONAL FLUX DIAGRAM:

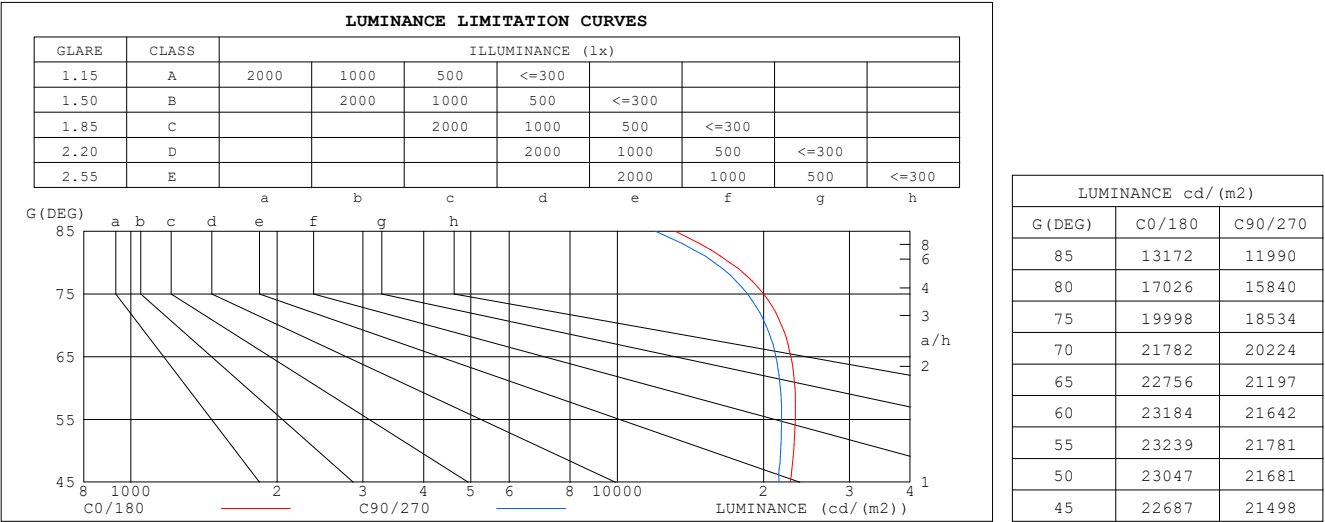
$\gamma$	C0	C45	C90	C135	C180	C225	C270	C315	$\gamma$	$\Phi$ zone	$\Phi$ total	%lum,lamp
10	37.44	37.02	36.67	36.19	36.53	36.54	36.68	36.96	0- 10	3.521	3.521	2.91,2.91
20	36.75	36.15	35.40	34.61	35.03	34.97	35.45	36.13	10- 20	10.24	13.76	11.4,11.4
30	35.12	34.37	33.36	32.03	32.62	32.40	33.40	34.41	20- 30	15.95	29.70	24.5,24.5
40	32.40	31.55	30.62	28.61	29.27	28.85	30.68	31.55	30- 40	20.05	49.75	41.1,41.1
50	28.15	27.29	26.48	24.46	24.86	24.54	26.65	27.37	40- 50	21.96	71.71	59.2,59.2
60	22.02	21.37	20.56	18.96	19.09	19.00	20.81	21.48	50- 60	20.93	92.64	76.5,76.5
70	14.15	13.80	13.14	11.99	12.06	11.97	13.36	13.94	60- 70	16.58	109.2	90.1,90.1
80	5.617	5.584	5.226	4.591	4.652	4.558	5.237	5.420	70- 80	9.474	118.7	98,98
90	0.2681	0.2561	0.0722	0.2475	0.2121	0.2675	0.0266	0.4189	80- 90	2.388	121.1	99.9,99.9
100	0.0532	0.0355	0.0355	0.0355	0.0532	0.0444	0.0266	0.0266	90-100	0.0853	121.2	100,100
110	0	0	0	0	0	0	0	0	100-110	0.0020	121.2	100,100
120	0	0	0	0	0	0	0	0	110-120	0	121.2	100,100
130	0	0	0	0	0	0	0	0	120-130	0	121.2	100,100
140	0	0	0	0	0	0	0	0	130-140	0	121.2	100,100
150	0	0	0	0	0	0	0	0	140-150	0	121.2	100,100
160	0	0	0	0	0	0	0	0	150-160	0	121.2	100,100
170	0	0	0	0	0	0	0	0	160-170	0	121.2	100,100
180	0	0	0	0	0	0	0	0	170-180	0	121.2	100,100
DEG	LUMINOUS INTENSITY:cd									UNIT:lm		

C Range: 0 - 360DEG  
 C Interval: 15.0DEG  
 Test Speed: HIGH  
 Temperature:25DEG  
 Operators:SENPU  
 Test Date:2025-12-30

$\gamma$  Range: 0 - 100DEG  
 $\gamma$  Interval: 1.0DEG  
 Test System:EVERFINE GO-2000B\_V1 SYSTEM V2.00.444  
 Humidity:61%  
 Test Distance:8.000m [K=1.0000]  
 Remarks:

LUMINANCE LIMITATION CURVES

Test:U:24.00V I:0.243A P:5.83W PF:1.000 Freq:0Hz		
Lamp Flux:121.17lx1 lm		
NAME: 22408-4000R-R	TYPE:	WEIGHT:
SPEC.:	DIM.:	SERIAL No.: 2025123001
MFR.:	SUR.:	Shielding Angle:



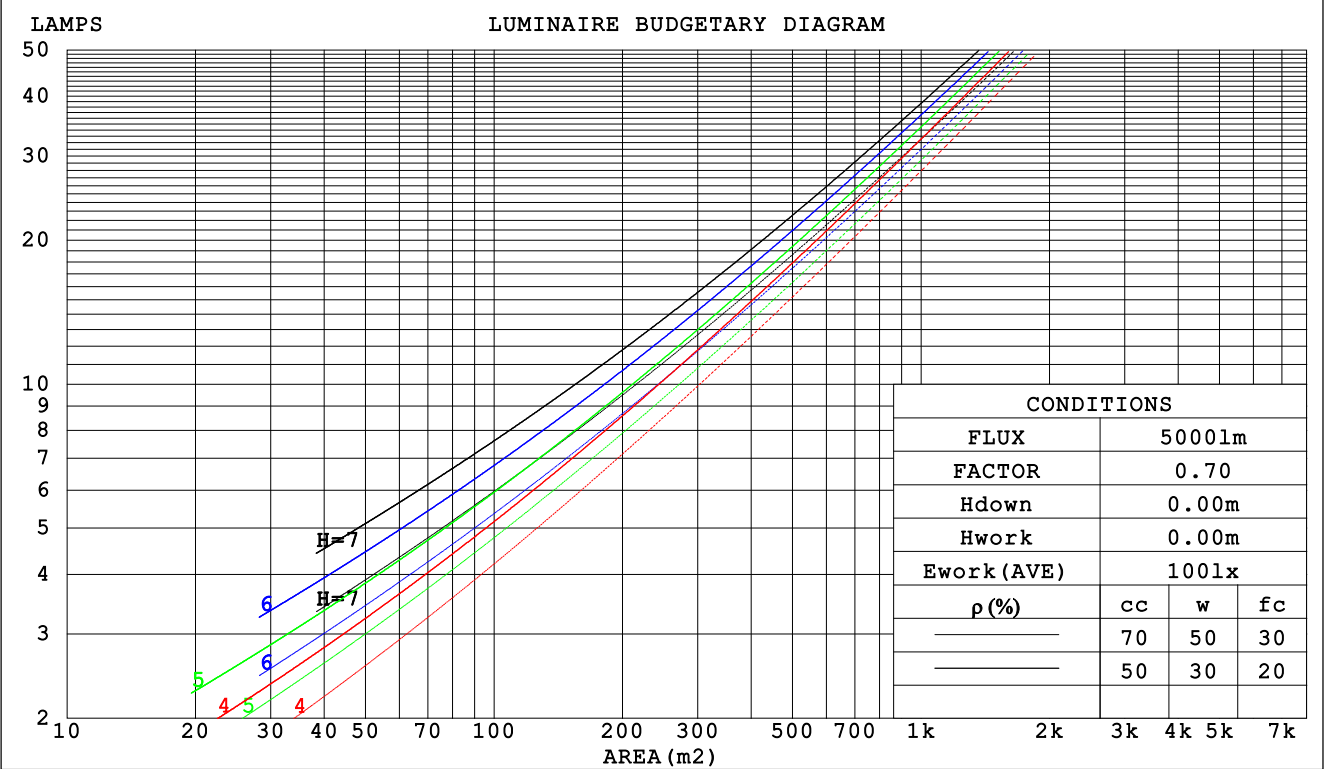
C Range: 0 - 360DEG  
C Interval: 15.0DEG  
Test Speed: HIGH  
Temperature:25DEG  
Operators:SENPU  
Test Date:2025-12-30

γ Range: 0 - 100DEG  
γ Interval: 1.0DEG  
Test System:EVERFINE GO-2000B\_V1 SYSTEM V2.00.444  
Humidity:61%  
Test Distance:8.000m [K=1.0000]  
Remarks:

CU AND LUMINAIRE BUDGETARY ESTIMATE DIAGRAM

Test:U:24.00V I:0.243A P:5.83W PF:1.000 Freq:0Hz		
Lamp Flux:121.17lx1 lm		
NAME: 22408-4000R-R	TYPE:	WEIGHT:
SPEC.:	DIM.:	SERIAL No.: 2025123001
MFR.:	SUR.:	Shielding Angle:

ρcc	80%			70%			50%			30%			10%			0
ρw	50%	30%	10%	50%	30%	10%	50%	30%	10%	50%	30%	10%	50%	30%	10%	0
ρfc	20%			20%			20%			20%			20%			0
RCR	RCR:Room Cavity Ratio						Coefficients of Utilization(CU)									
0.0	1.19	1.19	1.19	1.16	1.16	1.16	1.11	1.11	1.11	1.06	1.06	1.06	1.02	1.02	1.02	.00
1.0	1.03	.99	.95	1.01	.97	.93	.97	.93	.90	.93	.90	.87	.89	.87	.85	.83
2.0	.89	.82	.76	.87	.81	.75	.84	.78	.74	.81	.76	.72	.77	.74	.70	.68
3.0	.78	.69	.63	.76	.68	.62	.73	.67	.61	.71	.65	.60	.68	.63	.59	.57
4.0	.69	.60	.53	.67	.59	.52	.65	.57	.51	.62	.56	.51	.60	.55	.50	.48
5.0	.61	.52	.45	.60	.51	.45	.58	.50	.44	.56	.49	.44	.54	.48	.43	.41
6.0	.55	.46	.39	.54	.45	.39	.52	.44	.38	.50	.43	.38	.49	.42	.38	.35
7.0	.49	.40	.34	.49	.40	.34	.47	.39	.34	.46	.39	.33	.44	.38	.33	.31
8.0	.45	.36	.30	.44	.36	.30	.43	.35	.30	.42	.35	.30	.40	.34	.30	.28
9.0	.41	.33	.27	.41	.33	.27	.39	.32	.27	.38	.32	.27	.37	.31	.27	.25
10.0	.38	.30	.24	.37	.30	.24	.36	.29	.24	.35	.29	.24	.35	.28	.24	.22



C Range: 0 - 360DEG  
C Interval: 15.0DEG  
Test Speed: HIGH  
Temperature:25DEG  
Operators:SENPU  
Test Date:2025-12-30

γ Range: 0 - 100DEG  
γ Interval: 1.0DEG  
Test System:EVERFINE GO-2000B\_V1 SYSTEM V2.00.444  
Humidity:61%  
Test Distance:8.000m [K=1.0000]  
Remarks:

## WEC AND CCEC

Test:U:24.00V I:0.243A P:5.83W PF:1.000 Freq:0Hz Lamp Flux:121.171x1 lm		
NAME: 22408-4000R-R	TYPE:	WEIGHT:
SPEC.:	DIM.:	SERIAL No.: 2025123001
MFR.:	SUR.:	Shielding Angle:

pcc	80%			70%			50%			30%			10%			0	
pw	50%	30%	10%	50%	30%	10%	50%	30%	10%	50%	30%	10%	50%	30%	10%	0	
pfc	20%			20%			20%			20%			20%			0	
RCR	RCR:Room Cavity Ratio						Wall Exitance Coefficients (WEC)										
0.0																	
1.0	.321	.183	.058	.314	.179	.057	.300	.172	.055	.288	.166	.053	.277	.160	.052		
2.0	.302	.165	.051	.296	.163	.050	.284	.158	.049	.273	.153	.048	.263	.149	.047		
3.0	.279	.148	.044	.273	.146	.044	.263	.142	.043	.253	.139	.043	.244	.135	.042		
4.0	.257	.133	.039	.252	.132	.039	.242	.129	.038	.234	.126	.038	.226	.123	.037		
5.0	.237	.121	.035	.232	.119	.035	.224	.117	.034	.216	.114	.034	.209	.112	.034		
6.0	.219	.110	.031	.215	.109	.031	.208	.107	.031	.201	.104	.031	.194	.102	.030		
7.0	.204	.101	.029	.200	.100	.028	.193	.098	.028	.187	.096	.028	.181	.094	.028		
8.0	.190	.093	.026	.187	.092	.026	.181	.090	.026	.175	.089	.026	.170	.087	.025		
9.0	.178	.086	.024	.175	.085	.024	.169	.084	.024	.164	.082	.024	.160	.081	.023		
10.0	.167	.080	.022	.164	.079	.022	.159	.078	.022	.155	.077	.022	.151	.076	.022		

pcc	80%			70%			50%			30%			10%			0
pw	50%	30%	10%	50%	30%	10%	50%	30%	10%	50%	30%	10%	50%	30%	10%	0
pfc	20%			20%			20%			20%			20%			0
RCR	RCR:Room Cavity Ratio						Ceiling Cavity Exitance Coefficients (CCEC)									
0.0	.191	.191	.191	.163	.163	.163	.111	.111	.111	.064	.064	.064	.020	.020	.020	
1.0	.182	.157	.134	.155	.134	.115	.106	.092	.080	.061	.054	.046	.020	.017	.015	
2.0	.174	.132	.097	.149	.114	.084	.102	.079	.059	.059	.046	.034	.019	.015	.011	
3.0	.167	.115	.074	.143	.099	.064	.098	.069	.045	.057	.040	.026	.018	.013	.009	
4.0	.159	.102	.058	.137	.088	.050	.094	.061	.035	.054	.036	.021	.017	.012	.007	
5.0	.152	.091	.047	.130	.079	.041	.090	.055	.029	.052	.032	.017	.017	.011	.006	
6.0	.145	.083	.039	.124	.072	.034	.086	.050	.024	.050	.030	.014	.016	.010	.005	
7.0	.138	.076	.033	.118	.066	.029	.082	.046	.020	.048	.027	.012	.015	.009	.004	
8.0	.131	.070	.029	.113	.061	.025	.078	.043	.018	.045	.025	.011	.015	.008	.004	
9.0	.125	.066	.025	.108	.057	.022	.075	.040	.016	.043	.024	.009	.014	.008	.003	
10.0	.119	.061	.023	.103	.053	.020	.071	.037	.014	.042	.022	.008	.013	.007	.003	

C Range: 0 - 360DEG  
 C Interval: 15.0DEG  
 Test Speed: HIGH  
 Temperature: 25DEG  
 Operators: SENPU  
 Test Date: 2025-12-30

γ Range: 0 - 100DEG  
 γ Interval: 1.0DEG  
 Test System: EVERFINE GO-2000B\_V1 SYSTEM V2.00.444  
 Humidity: 61%  
 Test Distance: 8.000m [K=1.0000]  
 Remarks:

UGR(Unified Glare Rating) Table

Test:U:24.00V I:0.243A P:5.83W PF:1.000 Freq:0Hz Lamp Flux:121.17lx1 lm										
NAME: 22408-4000R-R					TYPE:			WEIGHT:		
SPEC.:					DIM.:			SERIAL No.: 2025123001		
MFR.:					SUR.:			Shielding Angle:		
ceiling/cavity	0.7	0.7	0.5	0.5	0.3	0.7	0.7	0.5	0.5	0.3
walls	0.5	0.3	0.5	0.3	0.3	0.5	0.3	0.5	0.3	0.3
working plane	0.2	0.2	0.2	0.2	0.2	0.2	0.2	0.2	0.2	0.2
Room dimensions	Viewed crosswise					Viewed endwise				
x = 2H y = 2H	24.2	25.8	24.5	26.0	26.2	23.9	25.5	24.2	25.7	25.9
3H	25.9	27.4	26.2	27.6	27.8	25.6	27.0	25.9	27.3	27.5
4H	26.6	27.9	26.9	28.2	28.5	26.2	27.6	26.5	27.8	28.1
6H	27.0	28.3	27.3	28.6	28.9	26.6	27.9	27.0	28.2	28.5
8H	27.1	28.4	27.5	28.6	28.9	26.7	28.0	27.1	28.3	28.6
12H	27.2	28.4	27.5	28.7	29.0	26.8	28.0	27.1	28.3	28.6
4H 2H	24.8	26.2	25.2	26.5	26.7	24.6	26.0	25.0	26.3	26.5
3H	26.7	27.9	27.1	28.2	28.5	26.5	27.7	26.8	28.0	28.3
4H	27.5	28.6	27.9	28.9	29.3	27.2	28.3	27.6	28.6	29.0
6H	28.0	29.0	28.4	29.4	29.7	27.7	28.7	28.1	29.1	29.4
8H	28.2	29.1	28.6	29.5	29.9	27.9	28.8	28.3	29.2	29.6
12H	28.3	29.1	28.7	29.5	29.9	28.0	28.8	28.4	29.2	29.6
8H 4H	27.8	28.7	28.2	29.0	29.4	27.5	28.4	27.9	28.8	29.2
6H	28.4	29.2	28.9	29.6	30.0	28.2	28.9	28.6	29.3	29.8
8H	28.7	29.4	29.1	29.8	30.2	28.4	29.1	28.9	29.5	30.0
12H	28.8	29.4	29.3	29.9	30.4	28.6	29.1	29.0	29.6	30.1
12H 4H	27.8	28.6	28.2	29.0	29.4	27.5	28.4	27.9	28.7	29.1
6H	28.5	29.2	29.0	29.6	30.0	28.2	28.9	28.7	29.3	29.8
8H	28.8	29.3	29.2	29.8	30.3	28.5	29.1	29.0	29.5	30.0
Variations with the observer position at spacings(CIE Pub.117):										
S = 1.0H	+ 0.1 / - 0.2					+ 0.1 / - 0.2				
1.5H	+ 0.2 / - 0.3					+ 0.2 / - 0.4				
2.0H	+ 0.2 / - 0.4					+ 0.2 / - 0.4				

CIE Pub.117, 121.2 lm Total Lamp Luminous Flux Corrected ( $8\log(F/F_0) = -7.3$ )  
Area: 0.0019 m<sup>2</sup>

C Range: 0 - 360DEG  
C Interval: 15.0DEG  
Test Speed: HIGH  
Temperature:25DEG  
Operators:SENPU  
Test Date:2025-12-30

$\gamma$  Range: 0 - 100DEG  
 $\gamma$  Interval: 1.0DEG  
Test System:EVERFINE GO-2000B\_V1 SYSTEM V2.00.444  
Humidity:61%  
Test Distance:8.000m [K=1.0000]  
Remarks:

## UTILIZATION FACTORS TABLE

Test:U:24.00V I:0.243A P:5.83W PF:1.000 Freq:0Hz Lamp Flux:121.17lx1 lm		
NAME: 22408-4000R-R	TYPE:	WEIGHT:
SPEC.:	DIM.:	SERIAL No.: 2025123001
MFR.:	SUR.:	Shielding Angle:

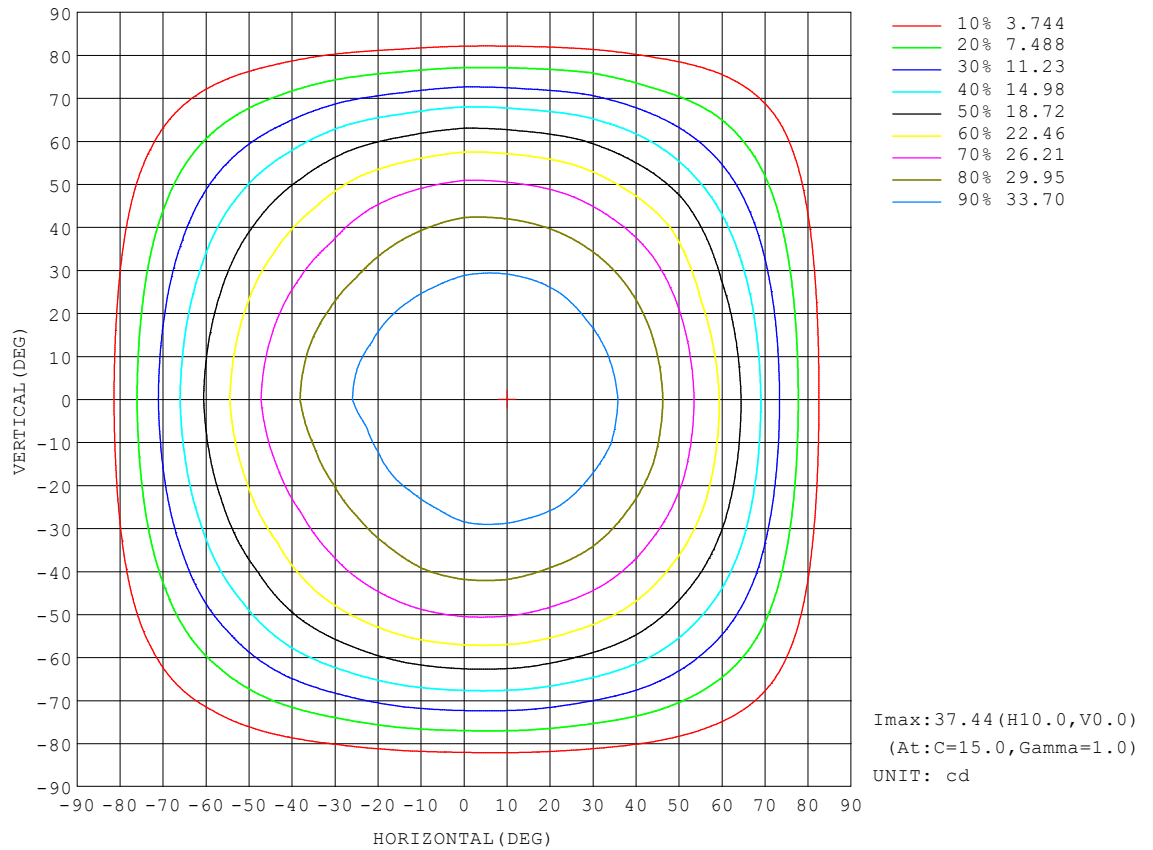
REFLECTANCE										
Ceiling	0.8	0.8	0.8	0.7	0.7	0.7	0.5	0.5	0.5	0
Walls	0.7	0.5	0.3	0.7	0.5	0.3	0.7	0.5	0.3	0
Working plane	0.2	0.2	0.2	0.2	0.2	0.2	0.2	0.2	0.2	0
ROOM INDEX	UTILIZATION FACTORS (PERCENT) $k(RI) \times RCR = 5$									
$k = 0.60$	55	43	36	55	43	36	53	43	36	29
0.80	66	53	46	64	53	46	63	52	45	38
1.00	74	63	55	73	62	55	71	64	54	47
1.25	81	70	63	80	70	63	77	68	62	54
1.50	87	76	69	85	75	68	82	74	67	60
2.00	94	85	78	92	84	77	88	81	76	68
2.50	98	90	83	96	88	83	92	86	81	72
3.00	101	94	88	99	93	87	95	90	85	77
4.00	106	100	95	103	98	93	99	94	91	82
5.00	108	103	99	106	101	97	101	97	94	85
ROOM INDEX	UF (total)									Direct
According to DIN EN 13032-2 2004			Suspended					SHRNOM = 1.25		

C Range: 0 - 360DEG  
 C Interval: 15.0DEG  
 Test Speed: HIGH  
 Temperature: 25DEG  
 Operators: SENPU  
 Test Date: 2025-12-30

γ Range: 0 - 100DEG  
 γ Interval: 1.0DEG  
 Test System: EVERFINE GO-2000B\_V1 SYSTEM V2.00.444  
 Humidity: 61%  
 Test Distance: 8.000m [K=1.0000]  
 Remarks:

## ISOCANDELA DIAGRAM

Test:U:24.00V I:0.243A P:5.83W PF:1.000 Freq:0Hz Lamp Flux:121.17lx1 lm		
NAME: 22408-4000R-R	TYPE:	WEIGHT:
SPEC.:	DIM.:	SERIAL No.: 2025123001
MFR.:	SUR.:	Shielding Angle:



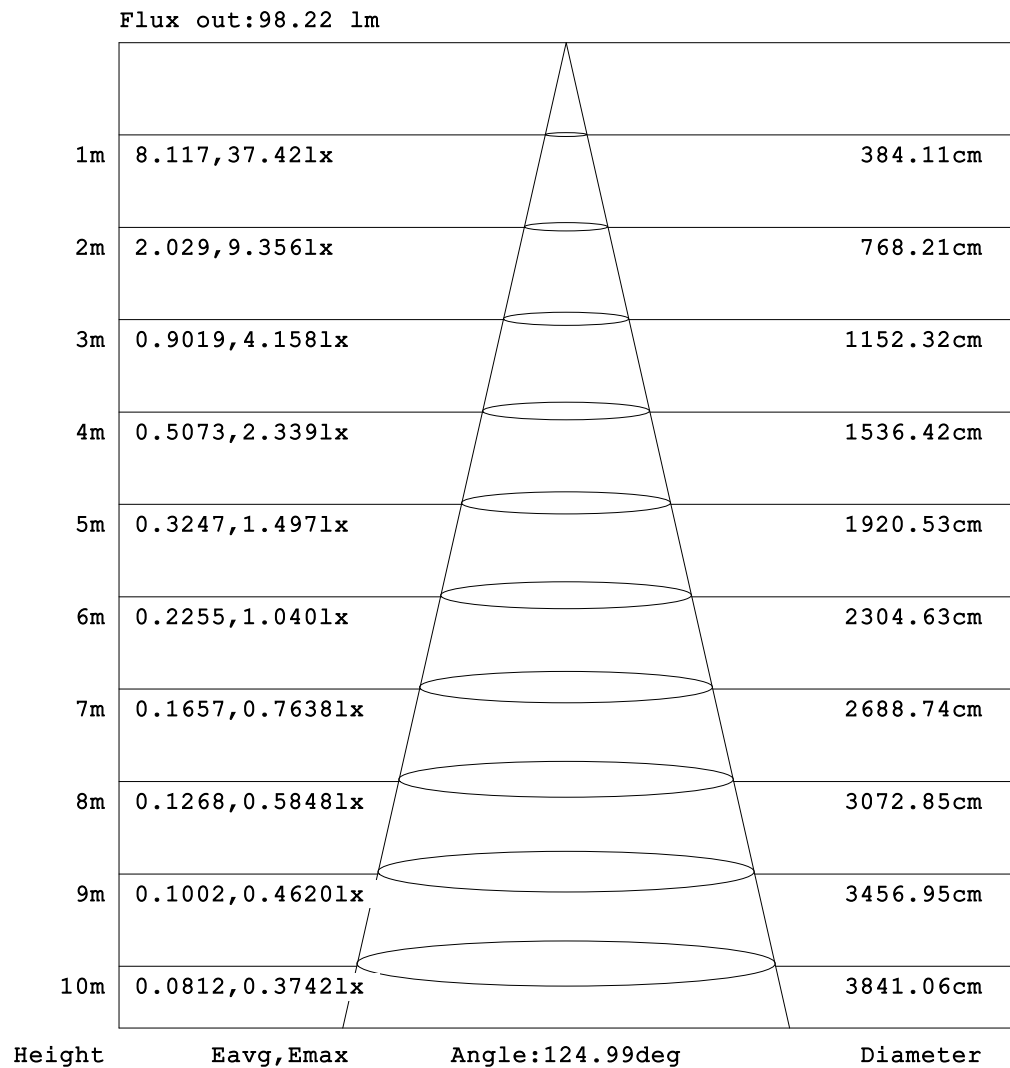
C Range: 0 - 360DEG  
C Interval: 15.0DEG  
Test Speed: HIGH  
Temperature:25DEG  
Operators:SENPU  
Test Date:2025-12-30

$\gamma$  Range: 0 - 100DEG  
 $\gamma$  Interval: 1.0DEG  
Test System:EVERFINE GO-2000B\_V1 SYSTEM V2.00.444  
Humidity:61%  
Test Distance:8.000m [K=1.0000]  
Remarks:



## AAI Figure

Test:U:24.00V I:0.243A P:5.83W PF:1.000 Freq:0Hz Lamp Flux:121.17lx1 lm		
NAME: 22408-4000R-R	TYPE:	WEIGHT:
SPEC.:	DIM.:	SERIAL No.: 2025123001
MFR.:	SUR.:	Shielding Angle:



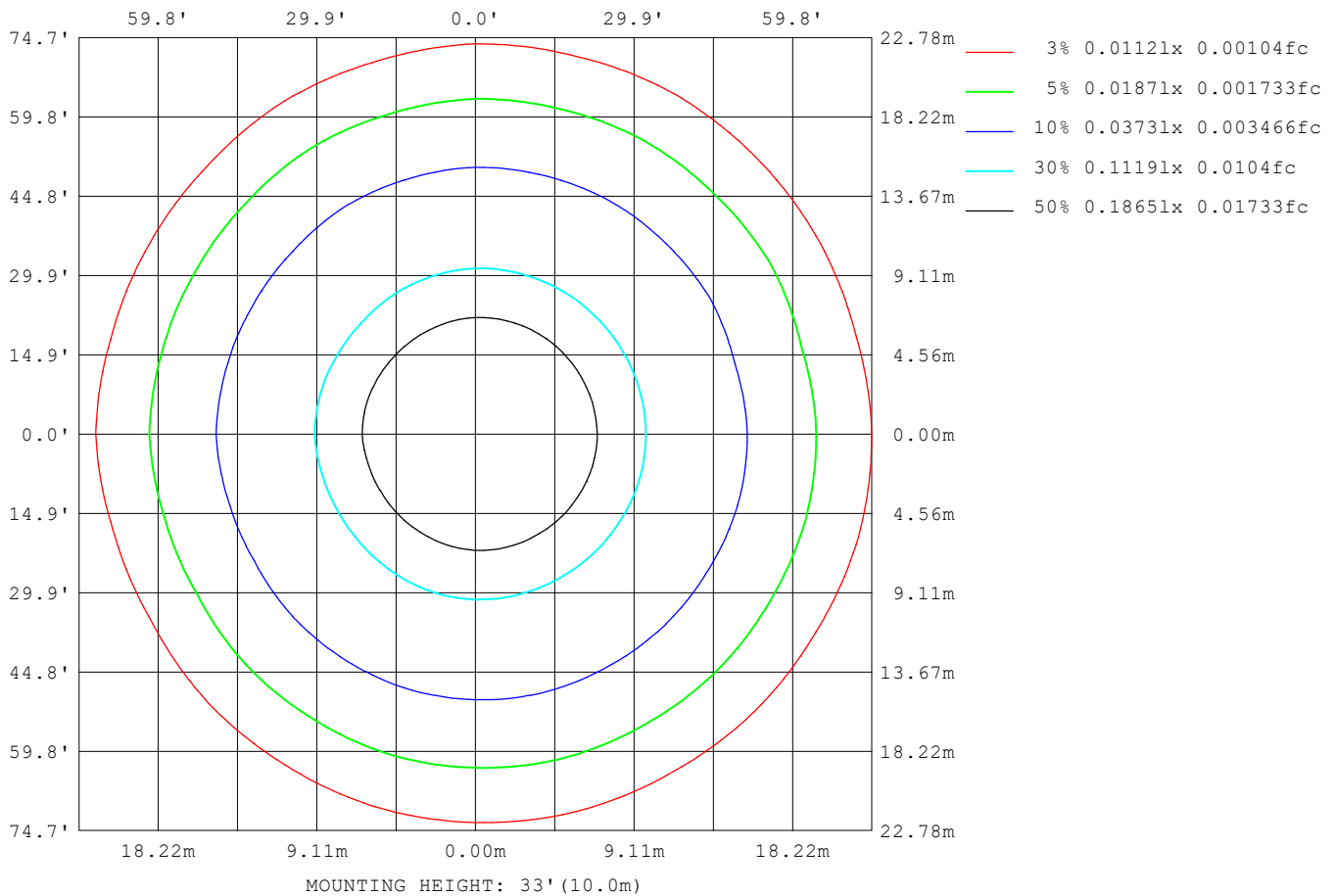
Note:The Curves indicate the illuminated area and the average illumination when the luminaire is at different distance.

C Range: 0 - 360DEG  
C Interval: 15.0DEG  
Test Speed: HIGH  
Temperature:25DEG  
Operators:SENPU  
Test Date:2025-12-30

γ Range: 0 - 100DEG  
γ Interval: 1.0DEG  
Test System:EVERFINE GO-2000B\_V1 SYSTEM V2.00.444  
Humidity:61%  
Test Distance:8.000m [K=1.0000]  
Remarks:

## ISOLUX DIAGRAM

Test:U:24.00V I:0.243A P:5.83W PF:1.000 Freq:0Hz Lamp Flux:121.17lx1 lm		
NAME: 22408-4000R-R	TYPE:	WEIGHT:
SPEC.:	DIM.:	SERIAL No.: 2025123001
MFR.:	SUR.:	Shielding Angle:



C Range: 0 - 360DEG  
C Interval: 15.0DEG  
Test Speed: HIGH  
Temperature:25DEG  
Operators:SENPU  
Test Date:2025-12-30

$\gamma$  Range: 0 - 100DEG  
 $\gamma$  Interval: 1.0DEG  
Test System:EVERFINE GO-2000B\_V1 SYSTEM V2.00.444  
Humidity:61%  
Test Distance:8.000m [K=1.0000]  
Remarks:

## LED Avg.L Report

Test:U:24.00V I:0.243A P:5.83W PF:1.000 Freq:0Hz Lamp Flux:121.171x1 lm		
NAME: 22408-4000R-R	TYPE:	WEIGHT:
SPEC.:	DIM.:	SERIAL No.: 2025123001
MFR.:	SUR.:	Shielding Angle:

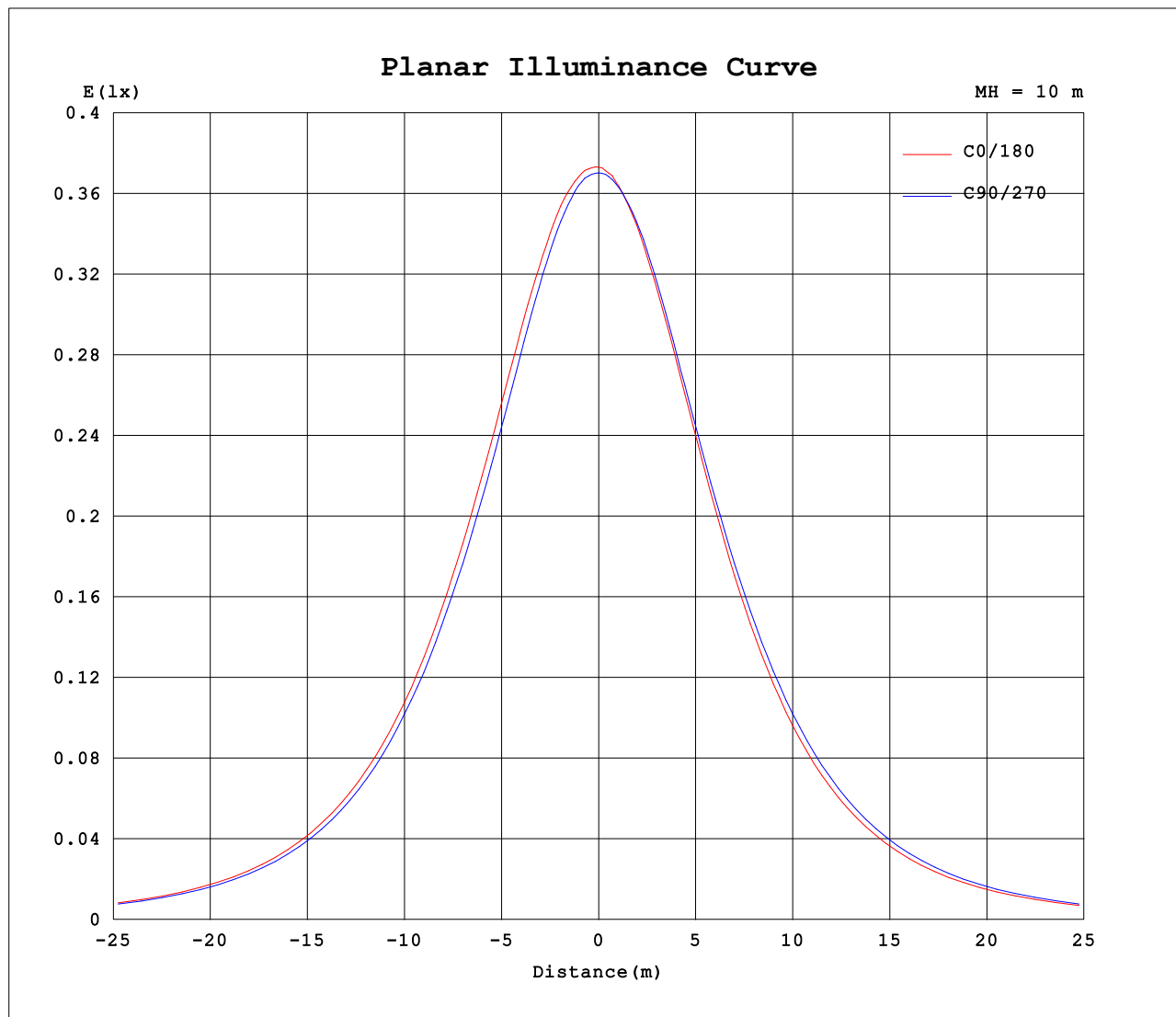
AvgL	cd/m2
L_0~180 (65) av	21171
L_0~180 (75) av	18428
L_0~180 (85) av	11741
L_90~270 (65) av	21348
L_90~270 (75) av	18670
L_90~270 (85) av	11818
L_45 (65) av	20828
L_45 (75) av	18107
L_45 (85) av	11698

Standard: GB/T 29293-2012

C Range: 0 - 360DEG  
C Interval: 15.0DEG  
Test Speed: HIGH  
Temperature:25DEG  
Operators:SENPU  
Test Date:2025-12-30

γ Range: 0 - 100DEG  
γ Interval: 1.0DEG  
Test System:EVERFINE GO-2000B\_V1 SYSTEM V2.00.444  
Humidity:61%  
Test Distance:8.000m [K=1.0000]  
Remarks:

## Planar Illuminance Curve



C Range: 0 - 360DEG  
C Interval: 15.0DEG  
Test Speed: HIGH  
Temperature: 25DEG  
Operators: SENPU  
Test Date: 2025-12-30

$\gamma$  Range: 0 - 100DEG  
 $\gamma$  Interval: 1.0DEG  
Test System: EVERFINE GO-2000B\_V1 SYSTEM V2.00.444  
Humidity: 61%  
Test Distance: 8.000m [K=1.0000]  
Remarks:

## LUMINOUS DISTRIBUTION INTENSITY DATA

Test:U:24.00V I:0.243A P:5.83W PF:1.000 Freq:0Hz Lamp Flux:121.17lx1 lm																			
NAME: 22408-4000R-R										TYPE:					WEIGHT:				
SPEC.:										DIM.:					SERIAL No.: 2025123001				
MFR.:										SUR.:					Shielding Angle:				

Table--1

UNIT: cd

C (DEG) γ (DEG)	0	15	30	45	60	75	90	105	120	135	150	165	180	195	210	225	240	255	270
0	37.3	37.4	37.1	37.2	37.1	37.1	37.0	37.0	37.0	36.9	36.9	36.9	37.3	37.4	37.1	37.2	37.1	37.1	37.0
5	37.4	37.4	37.2	37.2	37.1	37.0	37.0	36.8	36.8	36.6	36.6	36.6	37.0	37.1	36.8	36.9	36.9	37.0	36.9
10	37.4	37.3	37.1	37.0	36.9	36.7	36.7	36.4	36.4	36.2	36.1	36.0	36.5	36.6	36.3	36.5	36.5	36.7	36.7
15	37.2	37.1	36.8	36.7	36.5	36.3	36.2	35.9	35.7	35.5	35.3	35.4	35.9	35.9	35.7	35.9	35.9	36.1	36.2
20	36.8	36.6	36.3	36.2	35.9	35.6	35.4	35.0	34.8	34.6	34.5	34.5	35.0	35.0	34.8	35.0	35.1	35.3	35.5
25	36.1	35.9	35.6	35.4	35.0	34.7	34.4	33.9	33.6	33.5	33.3	33.3	34.0	33.9	33.7	33.8	33.9	34.2	34.5
30	35.1	35.0	34.6	34.4	34.0	33.7	33.4	32.8	32.3	32.0	31.8	32.0	32.6	32.5	32.4	32.4	32.6	33.0	33.4
35	33.9	33.8	33.4	33.1	32.7	32.5	32.1	31.5	30.9	30.4	30.2	30.4	31.0	30.9	30.7	30.7	31.1	31.6	32.1
40	32.4	32.3	31.8	31.6	31.1	31.0	30.6	30.1	29.3	28.6	28.4	28.6	29.3	29.1	28.8	28.8	29.5	30.1	30.7
45	30.5	30.4	29.9	29.6	29.2	29.1	28.9	28.2	27.4	26.7	26.2	26.5	27.2	27.0	26.7	26.8	27.6	28.3	28.9
50	28.1	28.0	27.5	27.3	26.9	26.8	26.5	25.9	25.2	24.5	23.8	24.1	24.9	24.5	24.4	24.5	25.5	26.0	26.7
55	25.3	25.3	24.7	24.6	24.2	24.1	23.7	23.3	22.5	21.9	21.2	21.4	22.2	21.8	21.7	22.0	22.8	23.3	24.0
60	22.0	22.0	21.5	21.4	21.0	20.9	20.6	20.1	19.4	19.0	18.2	18.4	19.1	18.7	18.7	19.0	19.8	20.1	20.8
65	18.3	18.3	17.9	17.8	17.4	17.4	17.0	16.7	16.0	15.6	14.9	15.0	15.7	15.3	15.4	15.6	16.3	16.6	17.3
70	14.2	14.2	13.9	13.8	13.5	13.5	13.1	12.8	12.3	12.0	11.4	11.5	12.1	11.7	11.8	12.0	12.6	12.7	13.4
75	9.83	9.89	9.65	9.65	9.41	9.39	9.11	8.89	8.41	8.21	7.76	7.76	8.29	7.99	8.07	8.18	8.59	8.73	9.25
80	5.62	5.70	5.55	5.58	5.42	5.43	5.23	5.07	4.73	4.59	4.28	4.30	4.65	4.43	4.49	4.56	4.81	4.89	5.24
85	2.18	2.20	2.19	2.20	2.15	2.09	1.99	1.93	1.78	1.69	1.61	1.58	1.71	1.62	1.62	1.65	1.73	1.80	1.93
90	0.27	0.25	0.32	0.26	0.33	0.17	0.07	0.16	0.28	0.25	0.32	0.25	0.21	0.25	0.19	0.27	0.23	0.27	0.03
95	0.06	0.04	0.07	0.04	0.05	0.03	0.04	0.04	0.08	0.05	0.10	0.10	0.04	0.07	0.04	0.06	0.03	0.04	0.03
100	0.05	0.04	0.04	0.04	0.04	0.04	0.04	0.05	0.04	0.04	0.06	0.06	0.05	0.05	0.04	0.04	0.03	0.03	0.03
105	0.00	0.00	0.00	0.00	0.00	0.00	0.00	0.00	0.00	0.00	0.00	0.00	0.00	0.00	0.00	0.00	0.00	0.00	0.00
110	0.00	0.00	0.00	0.00	0.00	0.00	0.00	0.00	0.00	0.00	0.00	0.00	0.00	0.00	0.00	0.00	0.00	0.00	0.00
115	0.00	0.00	0.00	0.00	0.00	0.00	0.00	0.00	0.00	0.00	0.00	0.00	0.00	0.00	0.00	0.00	0.00	0.00	0.00
120	0.00	0.00	0.00	0.00	0.00	0.00	0.00	0.00	0.00	0.00	0.00	0.00	0.00	0.00	0.00	0.00	0.00	0.00	0.00
125	0.00	0.00	0.00	0.00	0.00	0.00	0.00	0.00	0.00	0.00	0.00	0.00	0.00	0.00	0.00	0.00	0.00	0.00	0.00
130	0.00	0.00	0.00	0.00	0.00	0.00	0.00	0.00	0.00	0.00	0.00	0.00	0.00	0.00	0.00	0.00	0.00	0.00	0.00
135	0.00	0.00	0.00	0.00	0.00	0.00	0.00	0.00	0.00	0.00	0.00	0.00	0.00	0.00	0.00	0.00	0.00	0.00	0.00
140	0.00	0.00	0.00	0.00	0.00	0.00	0.00	0.00	0.00	0.00	0.00	0.00	0.00	0.00	0.00	0.00	0.00	0.00	0.00
145	0.00	0.00	0.00	0.00	0.00	0.00	0.00	0.00	0.00	0.00	0.00	0.00	0.00	0.00	0.00	0.00	0.00	0.00	0.00
150	0.00	0.00	0.00	0.00	0.00	0.00	0.00	0.00	0.00	0.00	0.00	0.00	0.00	0.00	0.00	0.00	0.00	0.00	0.00
155	0.00	0.00	0.00	0.00	0.00	0.00	0.00	0.00	0.00	0.00	0.00	0.00	0.00	0.00	0.00	0.00	0.00	0.00	0.00
160	0.00	0.00	0.00	0.00	0.00	0.00	0.00	0.00	0.00	0.00	0.00	0.00	0.00	0.00	0.00	0.00	0.00	0.00	0.00
165	0.00	0.00	0.00	0.00	0.00	0.00	0.00	0.00	0.00	0.00	0.00	0.00	0.00	0.00	0.00	0.00	0.00	0.00	0.00
170	0.00	0.00	0.00	0.00	0.00	0.00	0.00	0.00	0.00	0.00	0.00	0.00	0.00	0.00	0.00	0.00	0.00	0.00	0.00
175	0.00	0.00	0.00	0.00	0.00	0.00	0.00	0.00	0.00	0.00	0.00	0.00	0.00	0.00	0.00	0.00	0.00	0.00	0.00
180	0.00	0.00	0.00	0.00	0.00	0.00	0.00	0.00	0.00	0.00	0.00	0.00	0.00	0.00	0.00	0.00	0.00	0.00	0.00

C Range: 0 - 360DEG  
C Interval: 15.0DEG  
Test Speed: HIGH  
Temperature:25DEG  
Operators:SENPU  
Test Date:2025-12-30

γ Range: 0 - 100DEG  
γ Interval: 1.0DEG  
Test System:EVERFINE GO-2000B\_V1 SYSTEM V2.00.444  
Humidity:61%  
Test Distance:8.000m [K=1.0000]  
Remarks:

## LUMINOUS DISTRIBUTION INTENSITY DATA

Test:U:24.00V I:0.243A P:5.83W PF:1.000 Freq:0Hz Lamp Flux:121.17lx1 lm		
NAME: 22408-4000R-R	TYPE:	WEIGHT:
SPEC.:	DIM.:	SERIAL No.: 2025123001
MFR.:	SUR.:	Shielding Angle:

Table--2

UNIT: cd

C (DEG) γ (DEG)	285	300	315	330	345														
0	37.0	37.0	36.9	36.9	36.9														
5	37.0	36.9	37.0	36.9	37.1														
10	36.8	36.8	37.0	36.8	37.1														
15	36.3	36.4	36.6	36.6	36.9														
20	35.7	35.9	36.1	36.1	36.4														
25	34.8	35.1	35.4	35.4	35.7														
30	33.7	34.1	34.4	34.5	34.9														
35	32.5	32.8	33.1	33.3	33.7														
40	31.0	31.3	31.6	31.8	32.1														
45	29.1	29.5	29.6	29.9	30.2														
50	26.8	27.2	27.4	27.7	28.0														
55	24.1	24.5	24.6	25.0	24.8														
60	21.0	21.4	21.5	21.9	21.3														
65	17.3	17.8	17.9	18.1	17.7														
70	13.4	13.9	13.9	13.7	13.8														
75	9.37	9.76	9.57	9.71	9.79														
80	5.36	5.70	5.42	5.72	5.78														
85	2.03	2.06	2.21	2.39	2.46														
90	0.30	0.29	0.42	0.40	0.51														
95	0.04	0.02	0.07	0.02	0.05														
100	0.02	0.01	0.03	0.02	0.02														
105	0.00	0.00	0.00	0.00	0.00														
110	0.00	0.00	0.00	0.00	0.00														
115	0.00	0.00	0.00	0.00	0.00														
120	0.00	0.00	0.00	0.00	0.00														
125	0.00	0.00	0.00	0.00	0.00														
130	0.00	0.00	0.00	0.00	0.00														
135	0.00	0.00	0.00	0.00	0.00														
140	0.00	0.00	0.00	0.00	0.00														
145	0.00	0.00	0.00	0.00	0.00														
150	0.00	0.00	0.00	0.00	0.00														
155	0.00	0.00	0.00	0.00	0.00														
160	0.00	0.00	0.00	0.00	0.00														
165	0.00	0.00	0.00	0.00	0.00														
170	0.00	0.00	0.00	0.00	0.00														
175	0.00	0.00	0.00	0.00	0.00														
180	0.00	0.00	0.00	0.00	0.00														

C Range: 0 - 360DEG  
 C Interval: 15.0DEG  
 Test Speed: HIGH  
 Temperature:25DEG  
 Operators:SENPU  
 Test Date:2025-12-30

γ Range: 0 - 100DEG  
 γ Interval: 1.0DEG  
 Test System:EVERFINE GO-2000B\_V1 SYSTEM V2.00.444  
 Humidity:61%  
 Test Distance:8.000m [K=1.0000]  
 Remarks: